

EndoDrill® GI

Next Generation Endoscopic Ultrasound
Core Needle Biopsy (EUS-CNB)



The world's first market cleared
powered endoscopic core biopsy system
for core tissue sampling

TaeWoong Medical USA
4801 Wilshire Blvd. Suite 280, Los Angeles, CA 90010
E: info@taewoongusa.com T: 213-944-0503
www.taewoongusa.com
©2025 TaeWoong Medical USA. All Rights Reserved.

Manufacturer: **BIBB**
INSTRUMENTS



EndoDrill® GI – EUS-CNB

EndoDrill® GI is the world's first US FDA-cleared and EU CE-approved electric-driven core needle biopsy for endoscopic ultrasound (EUS-CNB). EndoDrill® consists of a sterile core needle biopsy instrument with an associated drive system.

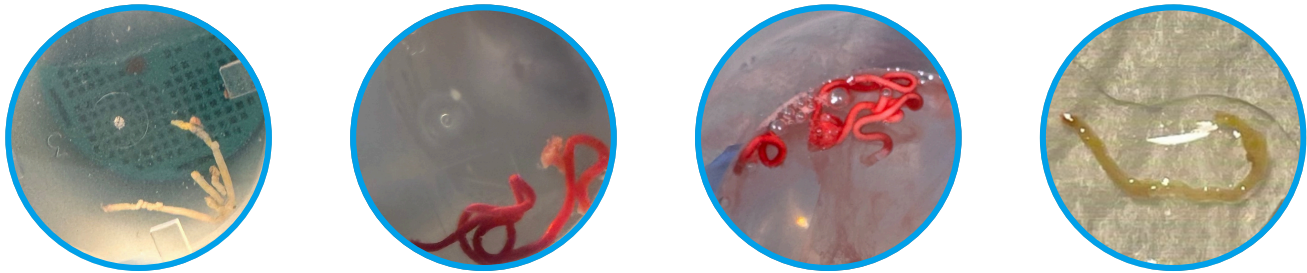


" This device will be a game changer in my opinion"

Features and Benefits

- Consistent solid core needle biopsies (CNB) with high diagnostic accuracy.^{2, 3, 4}
- Core tissue specimens suitable for both histological and genetic analysis.^{2, 3, 4}
- Clinically-experienced high precision and control with electric-driven high-speed rotation.
- Ultra-flexible instrument working with a highly angled endoscope.⁴
- High quality biopsies obtained without additional techniques, e.g. suction and ROSE.^{2, 3, 4}

True Core Biopsy Samples Obtained with EndoDrill® GI



Ordering Information

Article Name	Article Number	Order Quantity	Needle Size (Gauge)	Adjustable Needle Length (cm)	Minimum Accessory Channel (mm)
EndoDrill® GI Biopsy Instrument	13001	3	17	0-6	2.8
EndoDrill® GI Biopsy Instrument	13002	5	17	0-6	2.8
EndoDrill® Drive System	3000-01	1	Complete reusable system including motor unit, power supply cable, foot pedal and drive cable		

EndoDrill® GI is intended to be used with an ultrasound endoscope for ultrasonically guided fine needle sampling of submucosal- and extramural lesions within gastrointestinal tract, i.e. esophagus, mediastinal masses, stomach, pancreas, liver, small- and large intestines, lymph nodes and perirectal masses. This device is for diagnostic purposes only.

Reference:

1. Dr Antonio Mendoza Ladd MD, AGAF, FACG, FASGE, Professor of Medicine and Medical Director of Endcopy, UC Davis Health
2. Swahn et al., 2022, EndoDrill® Model X Biopsy Instrument, The Advent of the First EUS Guided 17 Gauge Core Needle Biopsy, Poster session presented at DDW, San Diego.
3. Swahn et al., 2024, The advent of the first electric driven EUS-guided 17 gauge core needle biopsy – A pilot study on subepithelial lesions. Scandinavian Journal of Gastroenterology, 1-7. <https://doi.org/10.1080/00365521.2024.2336611>
4. Mendoza Ladd A et al. Initial Experience With The Transmural Use Of A New Endoscopic Ultrasound Electric Core Needle Biopsy Device: A Case Series. Endoscopy International Open 2024. doi: 10.1055/a-2427-2311

Manufacturer:

BiBBInstruments AB Medicon Village | SE-223 81 Lund, Sweden | www.bibbinstruments.com

© 2025 BiBBInstruments AB, All right reserved. Unless otherwise indicated,

ALL MARKS WITH ® ARE REGISTERED TRADEMARKS OWNED BY BIBBINSTRUMENTS. L-2023-036 REV 3